

# Hand Crank Hose Reel Instruction Manual

---



## **WARNING:**

Read carefully and understand all **INSTRUCTIONS** before operating. Failure to follow the safety rules and other basic safety precautions may result in serious personal injury. Save these instructions in a safe place and on hand so that they can be read when required. Keep these instructions to assist in future servicing.

---

## GENERAL SAFETY REGULATIONS

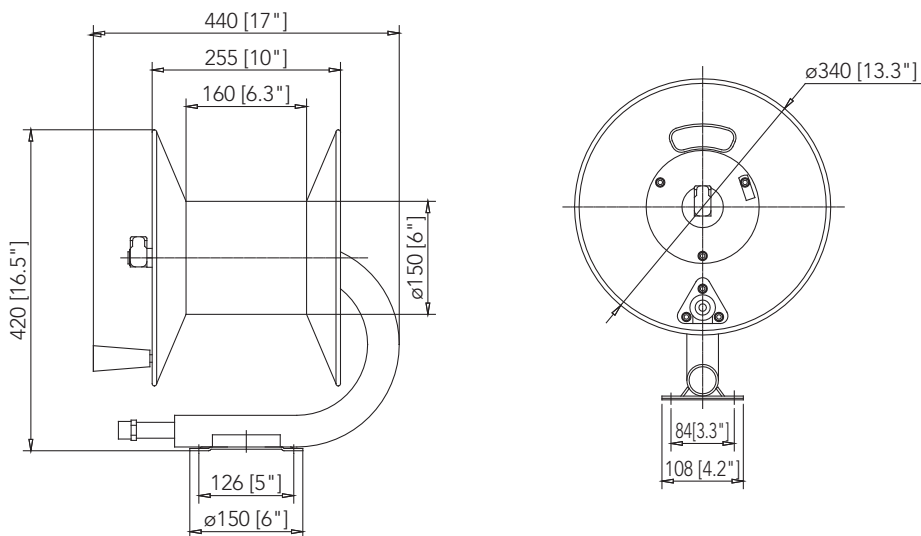


**WARNING:** The warnings, cautions, and instructions discussed in this instruction manual cannot cover all possible conditions or situations that could occur. It must be understood by the operator that common sense and caution are factors that cannot be built into this product, but must be supplied by the operator.

1. Keep the work area clean and dry. Damp or wet work areas can result in injury.
2. Keep children away from work area. Do not allow children to handle this product.
3. Use the right tool for the job. Do not attempt to force small equipment to do the work of larger industrial equipment. There are certain applications for which this equipment was designed. It will do the job better and more safely at the capacity for which it was intended. Do not modify this equipment, and do not use this equipment for a purpose for which it was not intended.
4. Check for damaged parts. Before using this product, carefully check that it will operate properly and perform its intended function. Check for damaged parts and any other conditions that may affect the operation of this product. Replace damaged or worn parts immediately.
5. Do not overreach. Keep proper footing and balance at all times to prevent tripping, falling, back injury, etc.
6. DO NOT use the equipment when tired or under the influence of drugs, alcohol, or medication. A moment of inattention while operating this equipment may result in serious personal injury.

## TECHNICAL DETAILS

Item No.	Ref. No.	Max. Pressure	Hose Capacity			Inlet/ Outlet
			Hose Material	I.D.	Length	
HR128.04	H208204	200BAR	Hose is not included	1/2"	20m	1/2"



Read the following precautions and instructions before you begin assembly or using. Keep these instructions in a dry place for future reference.

### SAFETY PRECAUTIONS

1. Make sure incoming pressure does not exceed the rated pressure.
2. Use the proper eye protection when assembling and using the hose reel.
3. Assemble the hose reel on a clean workbench free of debris and moisture.
4. Use soap and water when checking for air leaks.
5. Keep children away from the work area.

### **⚠ WARNING**

Exposure of skin directly to pressurized air or fluids could result in severe bodily injury.

### UNPACKING

When you receive your new hose reel, its handle will be mostly reassembled. Check to ensure that you have received the following loose parts.

Part No.	Description	Q'ty
7	Screw	3
2	Washer	6
9	Nut	3
11	Handle	1

## INSTALLATION AND ASSEMBLY

**Note:** You will need to purchase appropriate hardware for mounting your new reel. Holes have been provided in the reel base, for mounting on a suitable flat surface. You will also need to supply hose for the reel. Refer to specification information to determine the correct hose length.

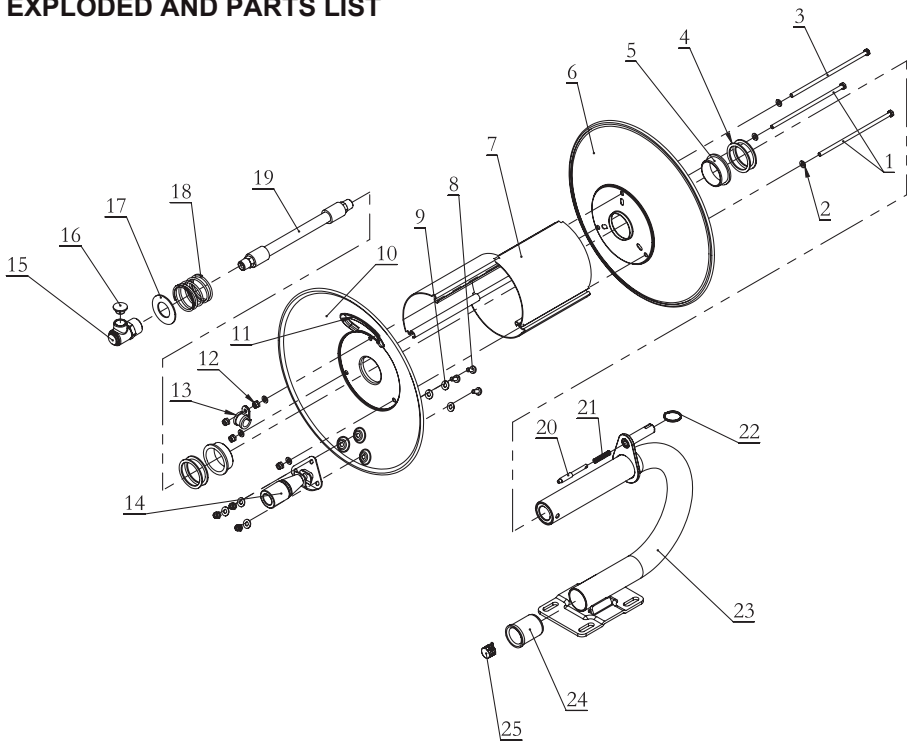
**Refer to appendix for assembly.**

1. Match handle to 3 holes in reel flange. Attach using 3 screws, nuts and washers.  
**Note: Nuts must go on handle side of flange.**
2. Put the bolts (3/8" or 10mm) through 4 holes in the base of the hose reel and tighten it to ceiling/wall/floor so reel can be fastened into position.
3. Apply teflon tape or thread sealant to reel's built in supply hose fitting. Then attach this supply hose to the outlet of power source.
4. Apply teflon tape or thread sealant to hose fitting threads. Attach to the reel swivel valve, then feed the rest of hose through the flange opening.
5. To avoid damaging the swivel valve, make sure to use a appropriate wrench to stabilize the swivel hosing tightening the hose fitting.
6. 3/8" I.D. Hose length should be 150 feet or less.
7. 1/2" I.D. Hose length should be 65 feet or less.

## LIMITED WARRANTY

1. The manufacturer warrants this hose reel against defects in material and craftsmanship, for a period of 12 months from date of purchase.
2. Hose, if supplied with reel, and O-rings are deemed to be normal wear items; not warranted.
3. Manufacturer's liability is limited to replacement or repair of defective material within the warranty period, when returned freight prepaid to the distributor or their designated service depot.
4. The warranty does not cover damage caused by accident, misuse or faulty installation.
5. The reel must be installed and maintained in compliance with these instructions.

## EXPLODED AND PARTS LIST



Part No.	Description	Q'ty	Part No.	Description	Q'ty
1	Bolt	2	14	Handle assembly	1
2	Flat washer	6	15	Swivel body	1
3	Bolt	1	16	Thread protection plug	1
4	Slip ring	4	17	Washer	1
5	Flange	2	18	Spring	1
6	Drum	1	19	Lead-in hose assembly	1
7	Core sector	3	20	Pin	1
8	Screw	3	21	Spring	1
9	Flat washer	6	22	Pull ring	1
10	Drum	1	23	Base	1
11	Trim strip (narrow)	1	24	Bend restrictor	1
12	Nut	7	25	Thread protection cap	1
13	Hose clamp	1			





